

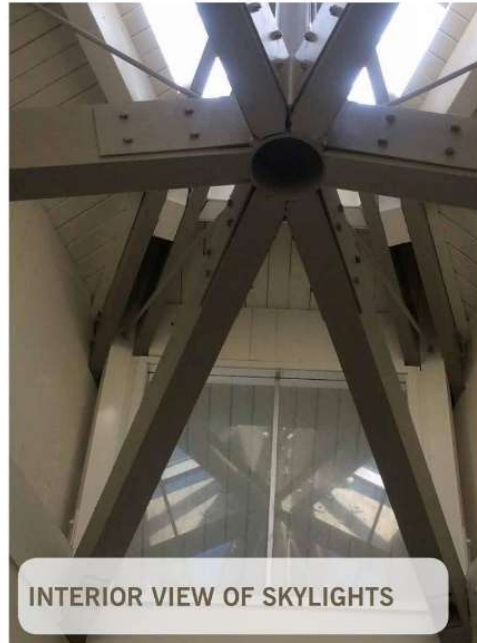
SAN LORENZO COMMUNITY CENTER AND PARK



SAN LORENZO COMMUNITY CENTER AND PARK



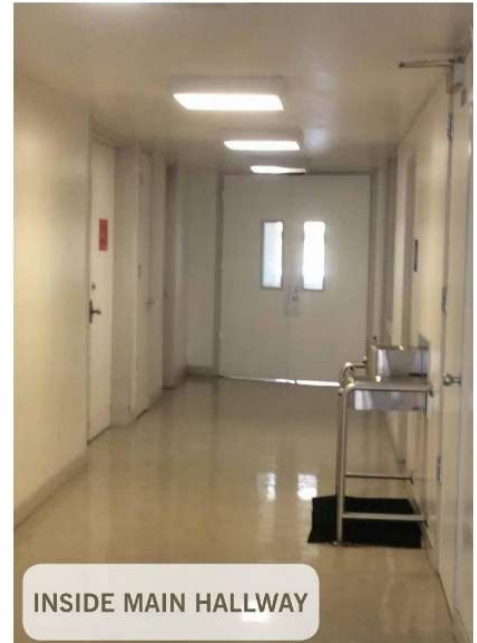
MAIN ENTRY



INTERIOR VIEW OF SKYLIGHTS



GYMNASTICS ROOM



INSIDE MAIN HALLWAY



AFTER SCHOOL PROGRAM ROOM



VIEW OF BUILDING FROM PARK

HAYWARD AREA RECREATION DISTRICT AND PARK DISTRICT NOVEMBER 13, 2019
537-005 SAN LORENZO COMMUNITY CENTER

DAHLIN GROUP ARCHITECTURE | PLANNING

WWW.DAHLINGROUP.COM



NOVEMBER 18, 2019

CURRENT PROGRAMMING



Art Studio	Martial Arts
Crafts	Pre-K
Dance	Rev Innovation
Dodgeball	Tai Chi
Extended Care	Yoga
Gymnastics	



AGES SERVED AT THE SAN LORENZO COMMUNITY CENTER

**Children
(0-5 yrs)**

5.3% of San Lorenzo
Population
~32% of Programs
offered

**Youth &
Teens
(6-17 yrs)**

21.3% of San Lorenzo
Population
~41% of Programs
offered

**Adults
(18-64 yrs)**

59.5% of San
Lorenzo Population
~11% of
Programs
offered

**Seniors
(65+ yrs)**

13.9% of San Lorenzo
Population
~16% of Programs
offered

Population data estimated by United States Census Bureau for July 1, 2018

EXISTING PROGRAMMING

HAYWARD AREA RECREATION DISTRICT AND PARK DISTRICT
537-005 SAN LORENZO COMMUNITY CENTER

NOVEMBER 13, 2019

DAHLIN GROUP ARCHITECTURE | PLANNING

WWW.DAHLINGROUP.COM

OPPORTUNITIES

MULTI-PURPOSE SPACES



REGISTRATION/LOBBY



TEACHING KITCHEN



TECHNOLOGY



EVENTS



100 PEOPLE
(1200 SQ FT)

200 PEOPLE
(2400 SQ FT)

300 PEOPLE
(3600 SQ FT)

MULTI-GEN



NOVEMBER 18, 2019

WHAT CURRENT PROGRAMMING WOULD YOU LIKE TO SEE MORE OF? [23 VOTES TOTAL]

- 1. DANCE
- 2. SENIOR ACTIVITIES & FITNESS
- 3. ART STUDIO
- 4. AFTER SCHOOL PROGRAMS (TIE)
- 4. TAI CHI (TIE)
- 5. CRAFTS (TIE)
- 5. GYMNASTICS (TIE)
- 5. MARTIAL ARTS (TIE)
- 5. PRE-K (TIE)
- DODGEBALL (NO VOTES)
- REC INNOVATION (NO VOTES)

WHAT NEW OPPORTUNITIES WOULD YOU BE INTERESTED IN? [14 VOTES TOTAL]

- 1. CAFE
- 2. LARGE EVENTS
- 3. KIDS DANCE
- 4. COOKING CLASSES (TIE)
- 4. RENTABLE MULTI-PURPOSE (TIE)
- 4. REGISTRATION LOBBY (TIE)

HOW LARGE OF A EVENTS SPACE DO YOU FEEL THE COMMUNITY NEEDS? [8 VOTES TOTAL]

- 1. 300 PEOPLE [5 VOTES]
- 2. 100 PEOPLE [3 VOTES]
- 200 PEOPLE [NO VOTES]

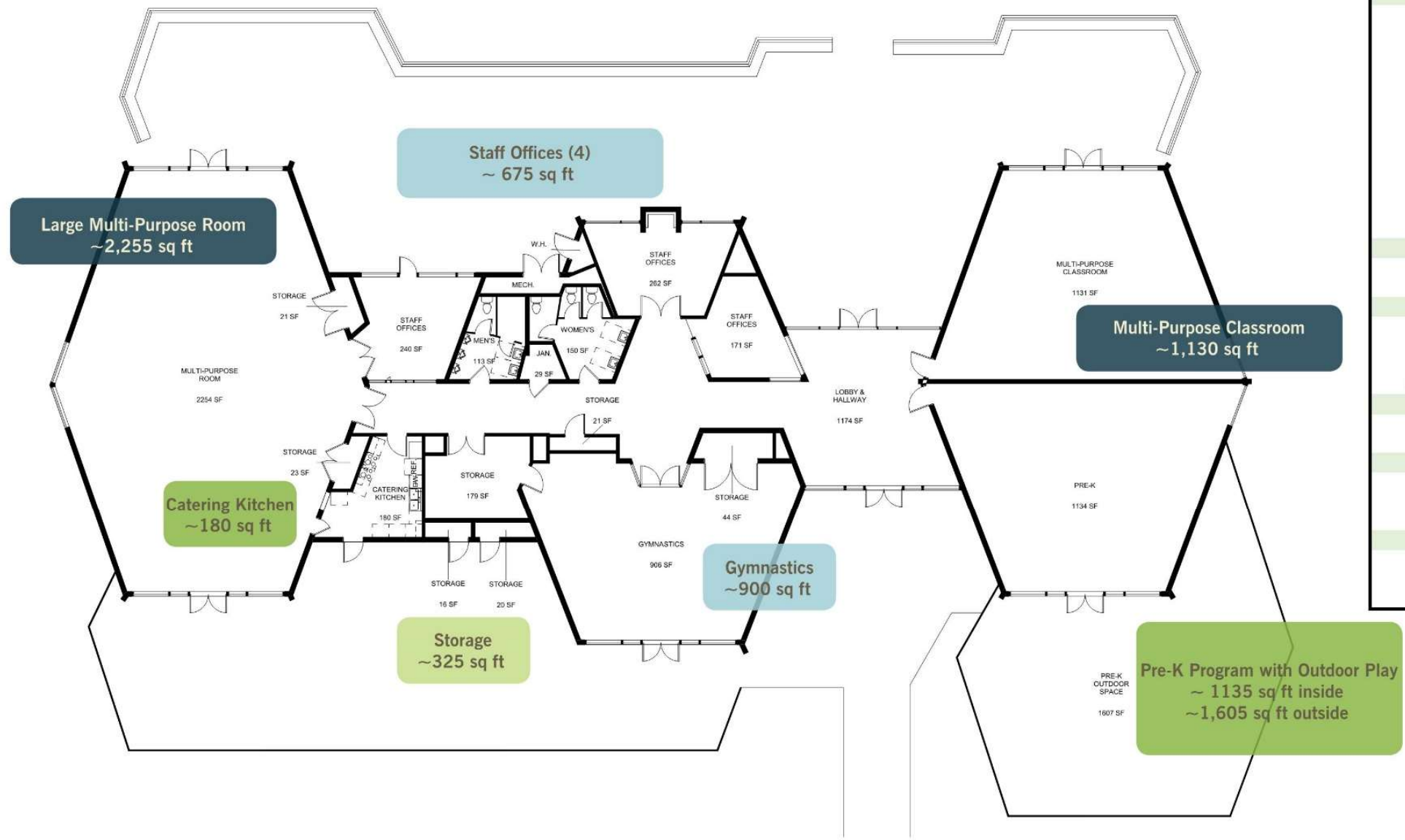
HOW FREQUENTLY WOULD YOU USE A CAFE LOCATED AT THE COMMUNITY CENTER? [6 VOTES TOTAL]

- 1. SOMETIMES (FEW TIMES A MONTH) [3 VOTES]
- 2. OFTEN (FEW TIMES A WEEK) [1 VOTE]
- 2. RARELY (FEW TIMES A YEAR) [1 VOTE]
- 2. NEVER [1 VOTE]



COMMUNITY CENTER STATS ~9,000 SQ FT

Adjacent to San Lorenzo Community Park which will have baseball diamonds, accessible playgrounds, amphitheater, lake, picnic areas, dog parks, bocce courts, soccer fields, exercise stations

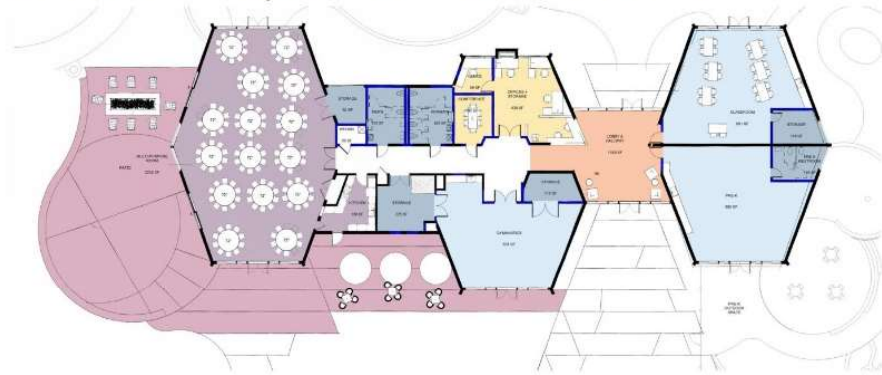


Priority	Topic	Low	Medium	High
	Overall			
	Practical Floor Plan		Orange	
	Higher level of finishes		Orange	
	WIFI & Technology			Red
	Systems Upgrades			Red
	Façade Upgrades		Orange	
	Keycard Access		Orange	
	New Programs (expanded space)		Orange	
	Larger Lobby			Red
	Registration and reception			Red
	Contemporary displays		Orange	
	Open layout offices		Orange	
	Storage			Red
	Pre-K			
	Pre-K Restrooms			Red
	Separate Pre-K access	Grey		
	Multi-Purpose			
	Additional large multi-purpose space		Orange	
	Modular multi-purpose space			Red
	Dance space			Red
	Mirrors and ballet bar at Dance space		Orange	
	Sports & Park			
	Equipment check out room	Grey		
	Pickleball courts	Grey		
	Rental Facility			
	250-300 person capacity			Red
	better acoustics			Red
	technology integration			Red
	Kitchen			
	Commercial Kitchen	Grey		
	Catering Kitchen		Orange	
	Vehicle access to kitchen		Orange	

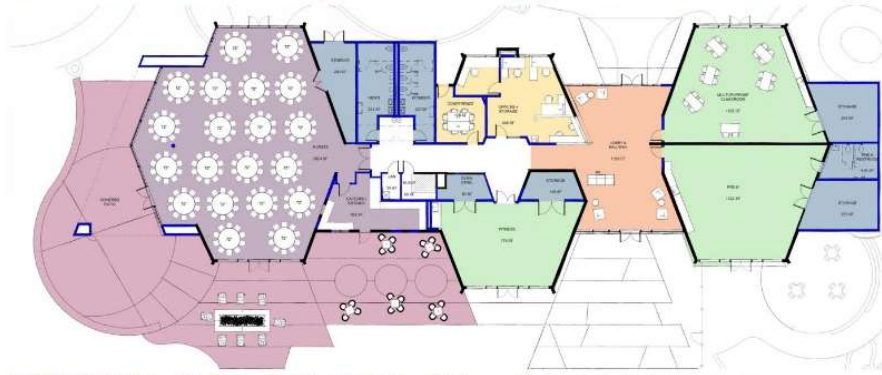
Priorities identified by the Stakeholder Group at programming meetings.

OPTION SUMMARY

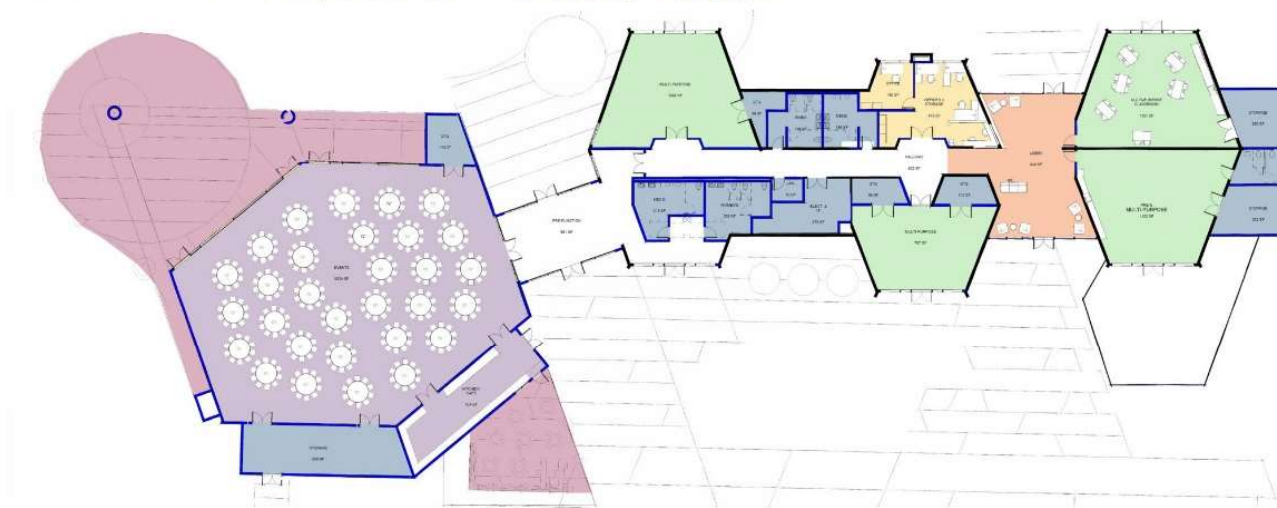
OPTION 1 - 9,000 SF - \$5.9M TOTAL



OPTION 2A - 10,000 SF - \$8.9M TOTAL



OPTION 2B - 16,000 SF - 14.6M TOTAL



KEY

- ENTRY
- STAFF AND ADMINISTRATION
- DEDICATED ROOMS
- MULTI-PURPOSE
- EVENTS AND KITCHEN
- SUPPORT
- EXTERIOR USES



PLAN OPTION 1 - 9,000 SF

\$3.6 M DIRECT BUILDING

\$1 M LANDSCAPE

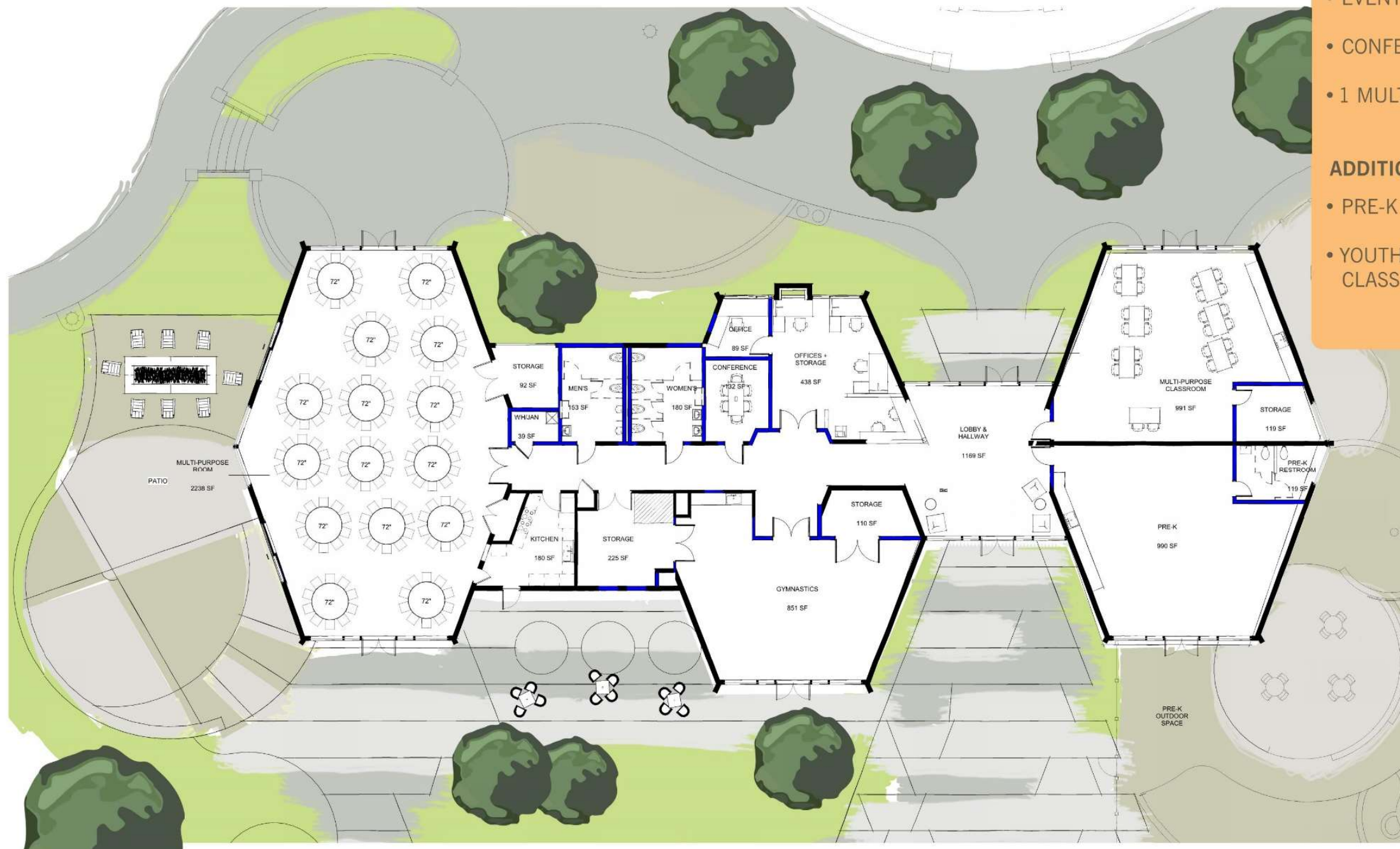
\$5.9 M TOTAL

RENTAL OPTIONS [3]

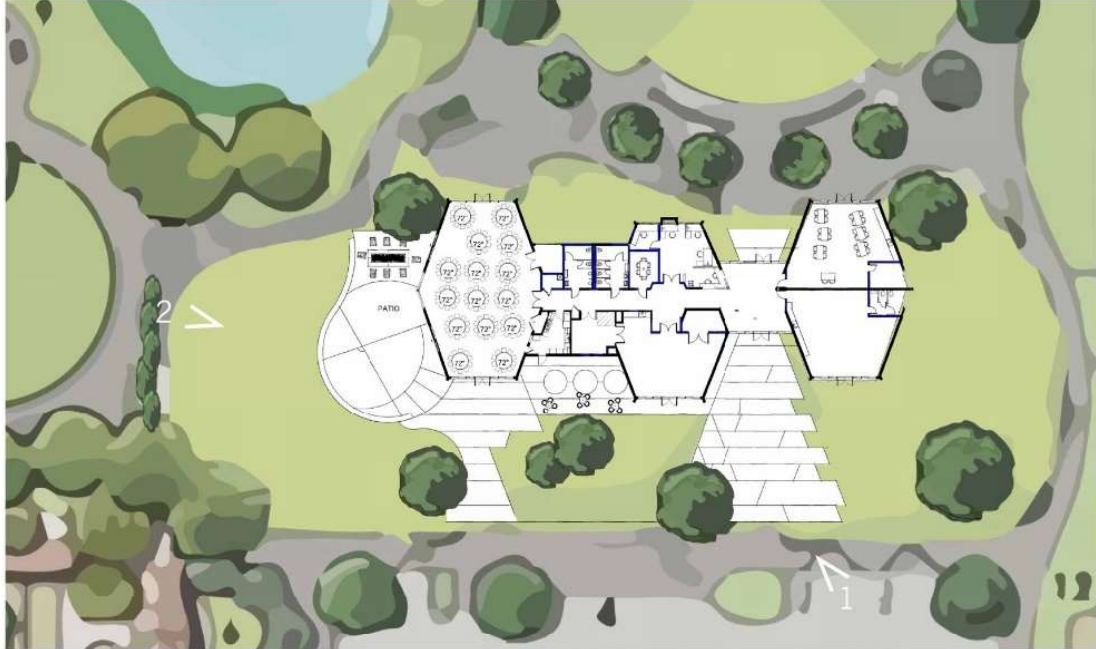
- EVENTS SPACE (150 PEOPLE)
- CONFERENCE ROOM
- 1 MULTI-PURPOSE ROOM

ADDITIONAL SPACES

- PRE-K
- YOUTH PROGRAM MULTI-PURPOSE CLASSROOMS



SITE - OPTION 1



PLAN OPTION 2A -10,000 SF

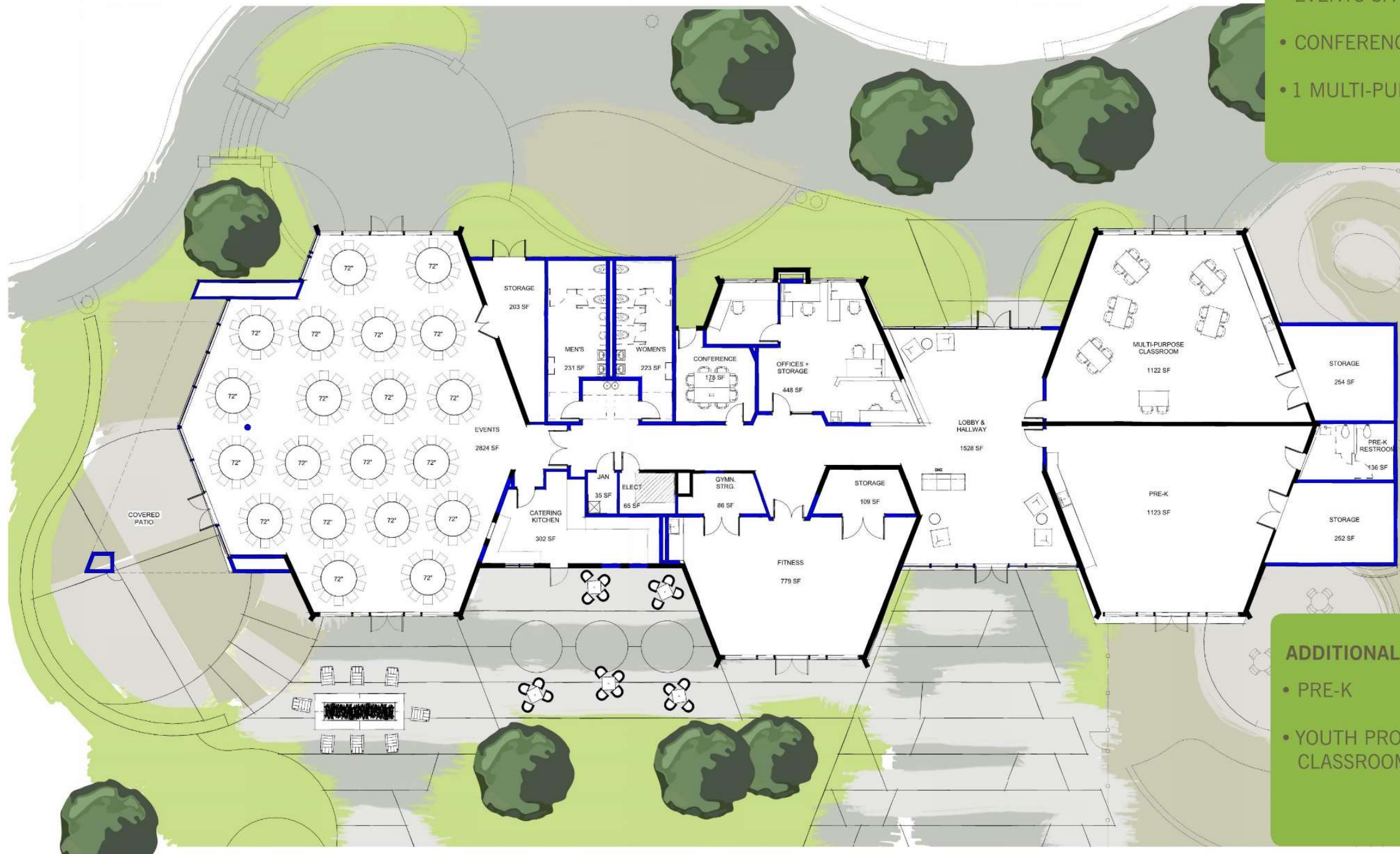
\$6 M DIRECT BUILDING

\$1 M LANDSCAPE

\$8.9 M TOTAL

RENTAL OPTIONS [3]

- EVENTS SPACE (200 PEOPLE)
- CONFERENCE ROOM
- 1 MULTI-PURPOSE ROOM

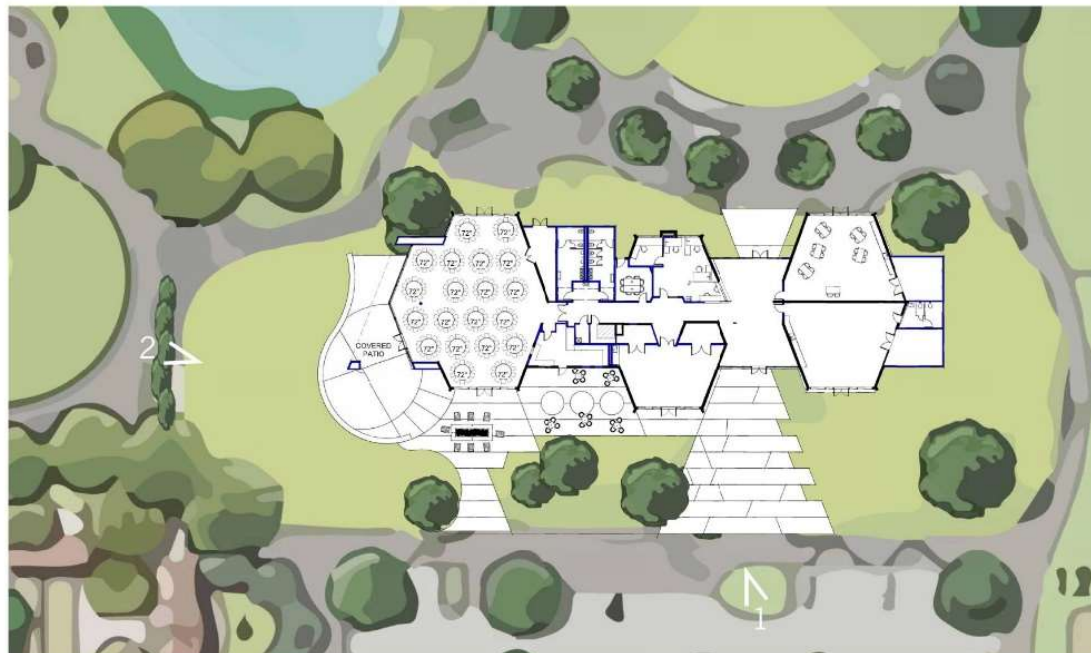


ADDITIONAL SPACES

- PRE-K
- YOUTH PROGRAM MULTI-PURPOSE CLASSROOMS



SITE - OPTION 2A



200 Person Events Space
Lone Tree Golf Club



HAYWARD AREA RECREATION DISTRICT AND PARK DISTRICT NOVEMBER 13, 2019
537-005 SAN LORENZO COMMUNITY CENTER

DAHLIN GROUP ARCHITECTURE | PLANNING

WWW.DAHLINGROUP.COM



NOVEMBER 18, 2019

PLAN OPTION 2B -16,000 SF

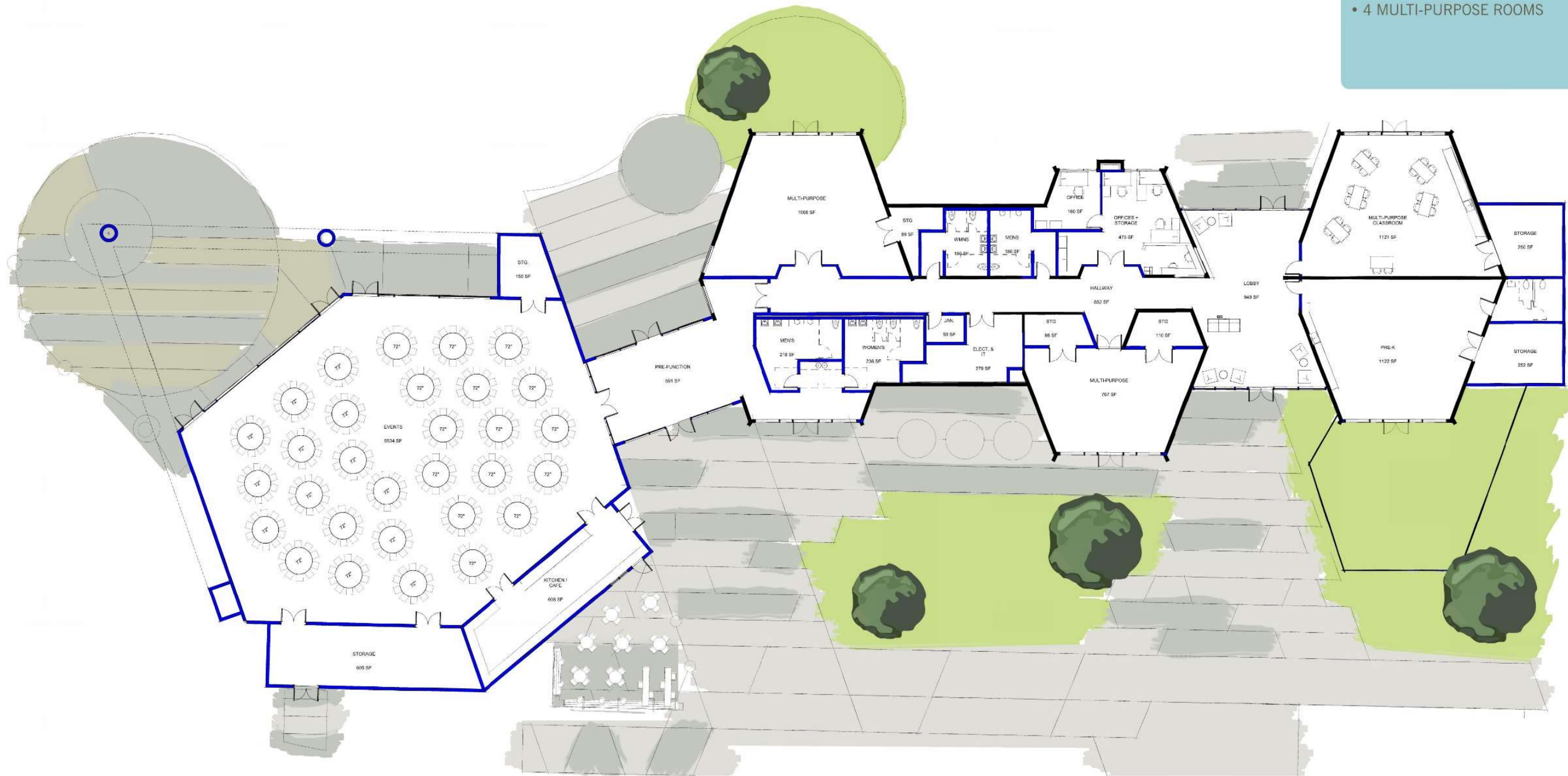
\$12 M DIRECT BUILDING

\$1 M LANDSCAPE

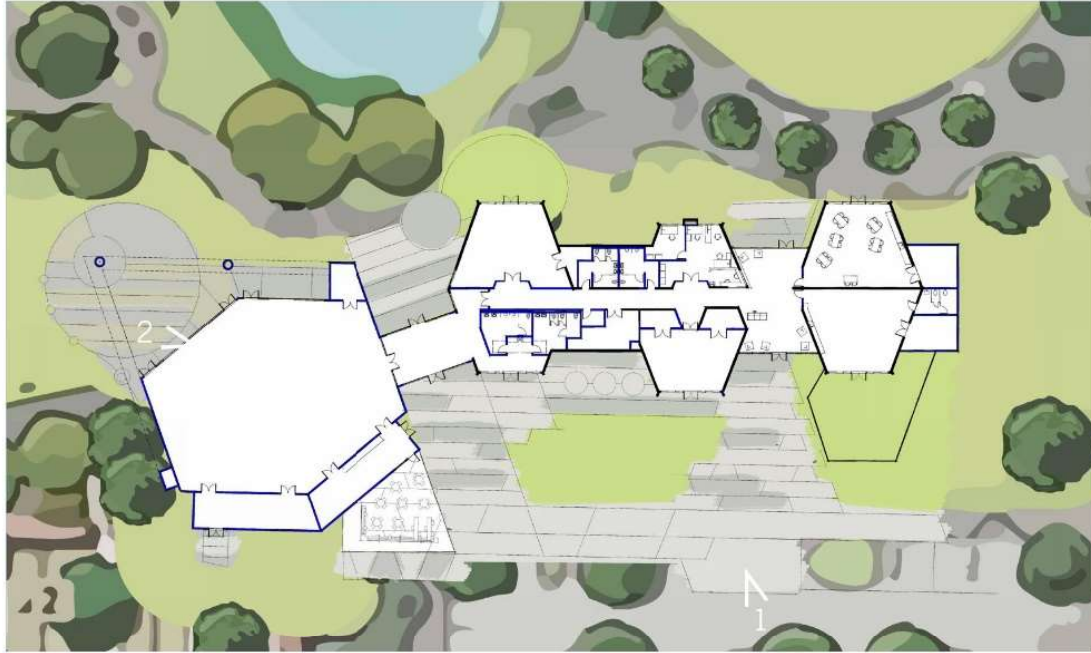
\$14.6 M TOTAL

RENTAL OPTIONS [5]

- EVENTS SPACE (300 PEOPLE)
- 4 MULTI-PURPOSE ROOMS



SITE - OPTION 2B



HAYWARD AREA RECREATION DISTRICT AND PARK DISTRICT NOVEMBER 13, 2019
537-005 SAN LORENZO COMMUNITY CENTER

DAHLIN GROUP ARCHITECTURE | PLANNING

WWW.DAHLINGROUP.COM



NOVEMBER 18, 2019